

Set 4312A

for polishing composite

Polishing is carried out in three subsequent steps:

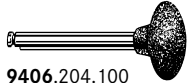
1. The **light blue** polishers are designed for quick and effective pre-polishing of composite fillings.



9400.204.030



9403.204.055



9406.204.100

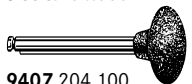
2. The **light pink** polishers achieve a satin finish.



9401.204.030



9404.204.055



9407.204.100

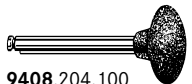
3. A high-gloss finish is obtained with the fine, **light grey** polishers.



9402.204.030



9405.204.055



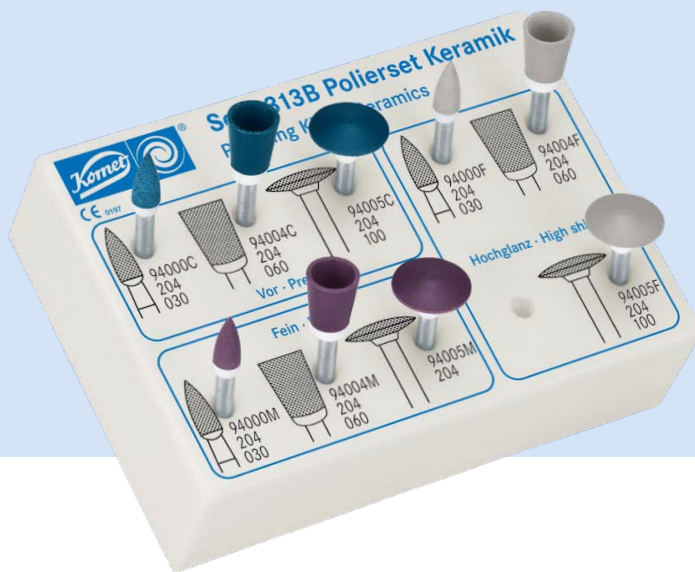
9408.204.100

This set is designed for polishing composite restorations and veneer acrylics. The three-step polishing system with coarse (blue), medium (pink) and fine grit (grey) guarantees an unequalled high-gloss finish on composite surfaces every time.

Recommendations for use:

- Recommended speed:
 ω_{opt} 5,000 – 6,000 rpm
- Use sufficient coolant (at least 50 ml/min.)
- Apply low contact pressure and work in a circular motion
- Work without polishing paste
- Use alcohol-free detergents and disinfectants suitable for polishers, e.g. Komet DC1 (manual reprocessing) or DCTherm (mechanical reprocessing)
- Suitable for sterilization in the autoclave only





Set 4313B

for polishing ceramics

Polishing is carried out in three subsequent steps:

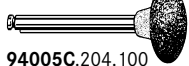
1. The **dark blue** polishers are designed for quick and effective pre-polishing of ceramics.



94000C.204.030



94004C.204.060



94005C.204.100

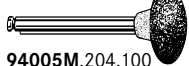
2. The **dark pink** polishers achieve a satin finish.



94000M.204.030



94004M.204.060



94005M.204.100

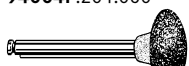
3. A high-gloss finish without need for an additional final firing step is obtained with the wear-resistant, high-performance **grey** polishers.



94000F.204.030



94004F.204.060



94005F.204.100

This set is designed for polishing ceramic restorations. The amazing surface quality obtained by these diamond interspersed polishers for pre-polishing, polishing and high-gloss polishing obviates the need for another final firing step after corrections have been made.



Recommendations for use:

- Recommended speed:
 \varnothing_{opt} 5,000 – 6,000 rpm
- Use sufficient coolant (at least 50 ml/min.)
- Apply low contact pressure and work in a circular motion
- Work without polishing paste
- Use alcohol-free detergents and disinfectants suitable for polishers, e.g. Komet DC1 (manual reprocessing) or DCTherm (mechanical reprocessing)
- Suitable for sterilization in the autoclave only

